

6 EASY STEPS :

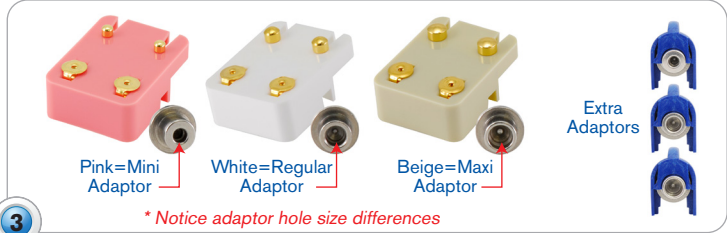
MediSystem®



1
CLEANSE - Examine the ears for any disorders, such as keloids, scar tissue, or any abnormalities. If any of these conditions exist, **DO NOT PIERCE** and advise customer to see their doctor. Otherwise, thoroughly cleanse each ear using the alcohol prep pads.

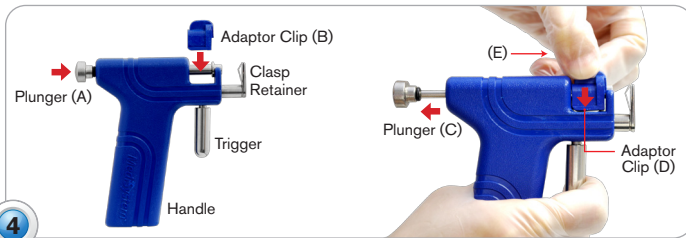


2
MARK - Mark each ear in the appropriate position desired by the customer with only the MediSept non-toxic surgical marking pen provided in this kit. **Customer must approve marking position before piercing.**



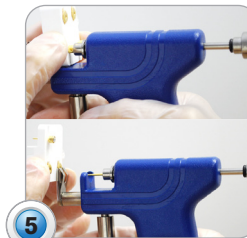
3
SELECT ADAPTOR SIZE
Mounts are colored according to size. Match the correct size adaptor to the color of the mount desired for piercing. **Notice adaptor hole size before loading earrings.**

The regular size adaptor comes pre-loaded on the instrument when purchased. The mini and maxi adaptors are located in the bottom of the instrument handle. Extra adaptors are located in the three blue adaptor clips.



4
CHANGE ADAPTOR
To remove the existing adaptor already located on the instrument:
1. Make sure the plunger is NOT pulled back (A).
2. Place the empty adaptor clip over the area as shown above (B).
3. Pull the plunger back firmly.
4. Lift the adaptor clip off the instrument. The earring adaptor will remain in the adaptor clip.

To insert another adaptor:
1. Make sure the plunger is pulled back (C).
2. Place the loaded adaptor clip over the area as shown above (D).
3. Place two fingers over the top adaptor clip to hold in place (E).
4. Squeeze trigger, release and lift adaptor clip upward.



5
LOAD - Make sure the plunger is pulled back. Insert one earring head into the adaptor and pull the mount straight up to release the earring. While keeping the instrument in a horizontal or slightly upward position, slide corresponding clasp (located directly above the earring) into the clasp retainer at the front end of the instrument. **After loading, avoid tipping the instrument downward to prevent the earring from falling out.**



6
PIERCE - Place the ear between the clasp retainer and the earring. Align the point of the earring with the mark on the ear by slowly squeezing the trigger until you feel the built in stop position. Once aligned, squeeze the trigger past the built in stop position to pierce the ear. Now, release the trigger and carefully pull the instrument down and away from the ear.

* Repeat these steps for the next ear.

*** FOR MORE INFORMATION PLEASE VISIT OUR WEBSITE ***

Ear piercing results in increased store traffic, brings in new customers and boosts the sales of all merchandise including permanent earrings, accessories, and cosmetics. It is an exciting new way to bring customers of all ages and ethnic backgrounds to the retail or medical outlet.

Ear piercing products manufactured by MediSystem® Inc. have been successfully used by physicians and retailers worldwide since 1974. All products are 100% made in the U.S.A. and are FDA registered.

MEDISYSTEM®

1227 West 254th Street, Harbor City, CA 90710
Toll Free: 1-877-327-7883 • Fax: 1-310-530-0149
E-mail: info@medisystem.com

MS1001-1R



www.medisystem.com